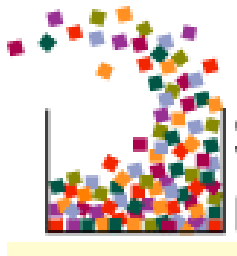


Trustee Training | August 17, 2018

---

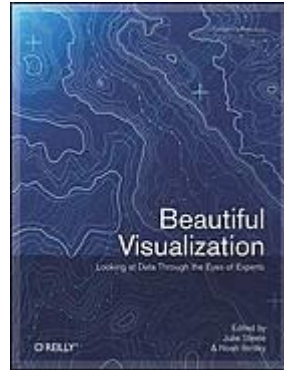
# Crafting your Library's Story with Data

---



Jody Hoesly  
Data Services Consultant  
South Central Library System  
[jhoesly@scls.info](mailto:jhoesly@scls.info)

# What is a Data Story?



Shapiro, M. (2010). **Once Upon a Stacked Time Series. The Importance of Storytelling in Information Visualization.** *Beautiful Visualization.*

---

# Story

==

Question + Visual Data + Context

# Telling the Library Story

*Jamie LaRue RIPL 2018*

---

## The Story

- Real person
- Problem
- Library intervention
- Happy ending
- One fact
- Phrase that pays

## The Messages

- Libraries transform lives
- Libraries transform communities
- Librarians are passionate advocates for lifelong learning
- Libraries are a smart investment

# Story Example

---



# Today's Discussion

---

1. Questions (Problems)
2. Datasets (Facts)
3. Visual Data
4. Stories

# Questions

---



<https://pxhere.com/en/photo/1159236>



# What do you wish for?



# What do you hope to change?

---





# What are your Strategic Initiatives?

---

Inform – Enrich – Inspire Community

Dayton Metro Library



[lib.calpoly.edu/news/2014/02/kennedy-library-wishes-you-good-luck-registering-for-spring-quarter](http://lib.calpoly.edu/news/2014/02/kennedy-library-wishes-you-good-luck-registering-for-spring-quarter)

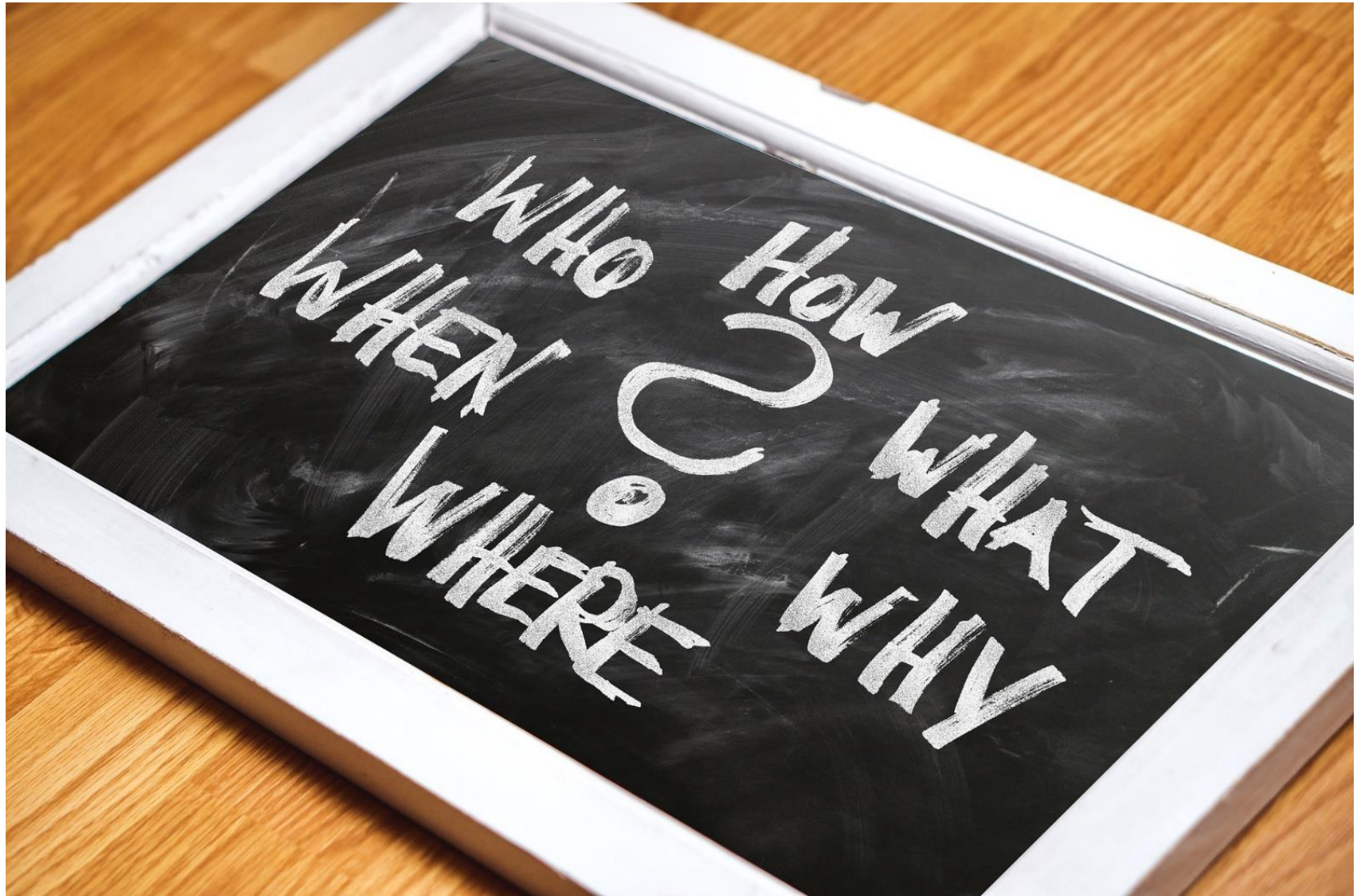
Embrace Culture – Ignite Curiosity – Connect Community

(Indian Trails Public Library District)

# What are the obstacles?



What do you want to know to support your cause?





# Datasets

---

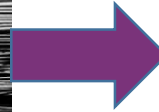


<https://pxhere.com/en/photo/916680>

# Data Formats

---

From File Folders



To Free Datasets



<https://pxhere.com/en/photo/536212>

<https://flic.kr/p/ddn4Pj>



# Library Data

---



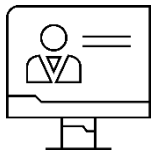
Budgets



Demographic/Socioeconomic \*



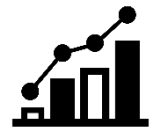
Electronic Resources



Service Data \*



Technology Usage

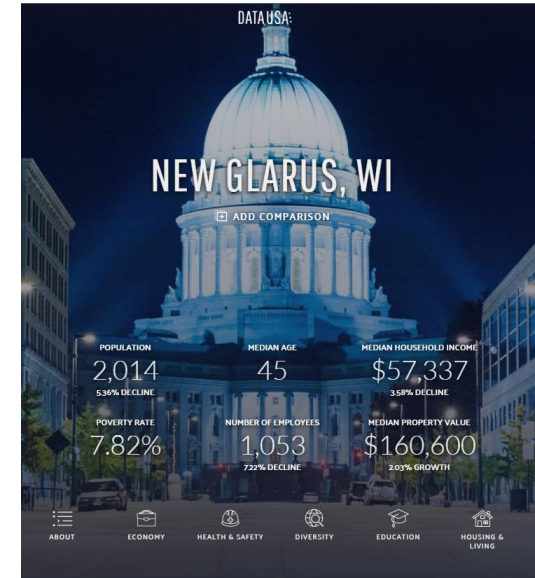


Survey Results \*

# Demographics/Socioeconomic



[getfacts.wisc.edu](http://getfacts.wisc.edu)



[datausa.io](http://datausa.io)



# Service Data

“The library collects the statistics and information required by the Division for Libraries and Technology and reports that information to the municipal governing body, the library system, and the Division, per Wis. Stat. § 43.58(6).”

Wisconsin Department of Public Instruction  
PUBLIC LIBRARY ANNUAL REPORT  
PL2401 (Rev. 1-15)  
S. 43.58(4) & 43.58(6)  
FOR THE YEAR 2017

**INSTRUCTIONS:** Complete and return two (2) original signed copies of the form and attachments to your system headquarters.  
Board-approved, signed annual reports for 2017 are due to the DPI Division for Libraries and Technology no later than March 1, 2018.

I. GENERAL INFORMATION					
1. Name of Library New Glarus Public Library		2. Public Library System South Central Library System			
3a. Head Librarian First Name Larson	3b. Head Librarian Last Name White	4a. Certification Grade Gr 1	4b. Certification Type Regular	5. Certification Expiration Date 09/01/2019	
6a. Street Address 319 2nd St.	6b. Mailing Address or PO Box PO Box 35	7. City / Village / Town New Glarus	8a. ZIP 53574	8b. ZIP4 0035	9. County Kres
10. Library Phone Number (608)527-2003	11. Fax Number (608)527-5126	12. Library E-mail Address of Director larson@ngli.org			
13. Library Website URL www.southcentralpubliclibrary.org	14. No. of Branches 0	15. No. of Bookmobiles Owned 0	16. No. of Other Public Service Outlets 0		
17. Does your library operate a books-by-mail program? No					
18. Some public libraries are legally organized as joint libraries, with neighboring municipalities or a county and municipality joining to operate a library. Is your library such a joint library legally established under Wis. Stat. s. 43.53? No					
19a. Winter Hours Open per Week 50	19b. Number of Winter Weeks 52	19c. Summer Hours Open per Week 0	19d. Number of Summer Weeks 0		
20. Square Footage of Public Library 2374	21. Did your library or a branch move to a new facility or expand an existing facility during the fiscal year? No		22. DUNS Number Nine digits 170401236		
II. LIBRARY COLLECTION					
	a. Number Owned / Leased	b. Number Added			
1. Books in Print Non-periodical printed publications	19,960	1,083			
2. Electronic Books E-books	164,910				
3. Audio Materials	2,910	222			
4. Electronic Audio Materials Downloadable	47,643				
5. Video Materials	5,025	436			
6. Electronic Video Materials Downloadable	1,058				
7. Other Materials Owned Describe 7 children's kits, 38 video games, 10 equipment	55				
8. Electronic Collections Locally Owned or Leased	4				
9. Total Electronic Collections Local, regional, and state	50				
10. Subscriptions Include periodicals and newspapers, exclude those in electronic format	103				

WISCONSIN DEPARTMENT OF PUBLIC INSTRUCTION

Public Library Development

Director Certification  
Coding Initiative  
Communications

Data and Reports

Wisconsin Public Library Service Data  
Economic Impact of Wisconsin Public Libraries  
Public Library Annual Report  
Wisconsin Public Library System Plans  
Library Boards and Directors  
Library Directories  
Library Legislation - Funding  
Library Services and Technology Act (LSTA)  
Mission and Work Plan  
Technology  
Youth and Inclusive Services

Related links

Division for Libraries and Technology  
Resources for Libraries and Lifelong Learning  
Wisconsin Libraries for Everyone  
School Libraries

Search

## Wisconsin Public Library Service Data: 1996-2015

The PRELIMINARY 2016 Wisconsin Public Library Service Data is now available. The Public Library Development Team will post a final version as soon as possible. Library directors are asked to review their library's data and send any questions to [libraryreport@dpi.wi.gov](mailto:libraryreport@dpi.wi.gov). Please note that there is a known issue with Hours Open data.

The Division does not publish a print version of Wisconsin Public Library Service Data.

The Public Library Development Team annually collects statistics from the state's public libraries. Excel files of the statistics for 1996-2015 are listed below.

Note: For those seeking national library data, [Public Libraries Survey](#) data is online at the Institute of Museum and Library Services (IMLS) [data catalog](#).

The Excel files of Wisconsin statistics include more than 115 data elements grouped by general categories. See the [Wisconsin Public Library Annual Report Instructions](#) for detailed definitions of the data elements.

Type of Statistics	Year
Statistics at the State and System Level Includes state totals and averages along with system-wide statistics in order by system name.	1996
	1997
	1998
	1999
	2000
	2001
	2002
	2003
	2004
	2005
Statistics at the County Level Includes county-wide statistics in order by county name.	1996
	1997
	1998
	1999
	2000
	2001
	2002
	2003
	2004
	2005
Statistics at the Public Library Level Includes statistics for all public libraries in the state in order by municipality name.	1996
	1997
	1998
	1999
	2000
	2001
	2002
	2003
	2004
	2005

<https://dpi.wi.gov/pld/data-reports/service-data>

INSTITUTE of Museum and Library SERVICES

About Us  
Grants  
Issues  
Publications  
Research & Evaluation

Home • Research & Evaluation • SURVEYS & DATA • Public Libraries Survey • Explore Public Libraries Survey (PLS) Data

## EXPLORE PUBLIC LIBRARIES SURVEY (PLS) DATA

Explore the data from the [Public Libraries Survey \(PLS\)](#) through our online publications, tools, and APIs or access the downloadable data files to conduct your own research.

[Facebook](#) [Twitter](#) [Email](#)

### Learn About PLS

Learn about PLS data: what and how data are collected, and how you can use the various tools to access it.

### Access Data and Reports

Access the downloadable data files and APIs for PLS data from FY 1992 to present to conduct your own research. Gain insights from IMLS publications about PLS, including PLS annual reports, research briefs, supplementary data tables, and other research dating from 1968.

### Explore the Data Catalog

Use the online search and discovery tools in our data catalog to dig into the PLS data from FY 2014 and earlier fiscal years. Explore the PLS visualizations and datasets to find information on state-level profiles, public library systems, and main libraries, branches, and bookmobiles.

### Review State Data

Check out the Census Bureau's Hot Reports for state-level information on public libraries, demographics, children and education, and business and income.

### Use DataFerret

Use the Census Bureau's DataFerret to investigate PLS data combined with other federal, state, and local data to suit your needs. Analyze PLS state summary, administrative entity, and outlet data from FY 2007 through FY 2014 in conjunction with data from the American Community Survey, American Housing Survey, Decennial Census, Census Population Estimates, etc.

<https://www.imls.gov/research-evaluation/data-collection/public-libraries-survey/explore-pls-data>

[illegible]

# Free Library DataSets



**South Central Library System**  
Helping Libraries Serve the Public

**Free DATASETS**  
For WI Public Libraries

**American FactFinder:** [factfinder.census.gov](http://factfinder.census.gov)

Includes population, age, business and industry, education, governments, housing, income, origins and language, poverty, race and Hispanic origin, and veteran data.

**Census Bureau TIGER/Line Shapefiles:** [census.gov/cen-bin/geo/shapefiles/index.php](http://census.gov/cen-bin/geo/shapefiles/index.php)

Shapefiles for U.S. census tracts, voting wards, county subdivisions, school districts, and more.

**Census Bureau Data Tools and Apps:** [census.gov/data/data-tools.html](http://census.gov/data/data-tools.html)

A list of powerful analysis tools such as OnTheMap, QWI Explorer, and Census Geocoder.

**County Health Rankings:** [countyhealthrankings.org/app/wisconsin/2017/download](http://countyhealthrankings.org/app/wisconsin/2017/download)

Vital health factor and outcome measures.

**Data.gov:** [www.data.gov](http://www.data.gov)

Open datasets from the federal government.

**Data USA:** [datausa.io](http://datausa.io)

Multiple public US Government data sources visually presented on economy, health & safety, diversity, education, and housing & living by cities, towns, and villages.

**GeoData@Wisconsin:** [maps.sco.wisc.edu/opengeoportal](http://maps.sco.wisc.edu/opengeoportal)

A portal for searching and downloading WI GIS data.

**FoodShare WI Data:** [dhs.wisconsin.gov/foodshare/rsdata.htm](http://dhs.wisconsin.gov/foodshare/rsdata.htm)

Monthly case counts, recipients, and benefits by county and state.

**Gapminder World Data:** [www.gapminder.org/data](http://www.gapminder.org/data)

Indicators and data providers (sources) compiled by Gapminder World, a fact tank on global development.

**GetFacts:** [getfacts.wisc.edu](http://getfacts.wisc.edu)

Census and American Community Survey (ACS) data by state, county, or county subdivision.

**GitHub Datasets:** <https://github.com/awesomedata/awesome-public-datasets>

A topic-centric list of high-quality open datasets in public domains.

**Global Libraries Data Atlas:** [glatlas.org](http://glatlas.org)

Data visualization portal for tracking performance and impact metrics of international libraries.

**Home Based Private Education-Statistics:** [dpi.wi.gov/sms/home-based/statistics](http://dpi.wi.gov/sms/home-based/statistics)

Enrollment of WI homeschooled students by CESA, grade, district, and county.

**Homeless Student Enrollment by Public School District:** [dpi.wi.gov/homeless/data](http://dpi.wi.gov/homeless/data)

Enrollment of homeless students by WI school district.

**Impact Survey results:** [impactsurvey.org](http://impactsurvey.org)

Library patron technology survey results.

**Kids Count Data Center:** [datacenter.kidscount.org/data#WI](http://datacenter.kidscount.org/data#WI)

Data and trend analysis that tracks the well-being of children in the United States.

05.23.2018 (J.Hoesly)

<https://goo.gl/55RLkS>

1



**South Central Library System**  
Helping Libraries Serve the Public

**Free DATASETS**  
For WI Public Libraries

**Madison Neighborhood Indicators:** [madison.api.wisc.edu/profile.php](http://madison.api.wisc.edu/profile.php)

Madison demographic, housing, public safety, health, economic vitality, and transportation indicators.

**Open Access Directory - Data Repositories:** [http://oad.simmons.edu/oadwiki/Data\\_repositories](http://oad.simmons.edu/oadwiki/Data_repositories)

A list of repositories and databases for open data.

**Open Enrollment Data and Reports:** [dpi.wi.gov/open-enrollment/data](http://dpi.wi.gov/open-enrollment/data)

Open enrollment data on pupil and aid transfer in and out of each WI school district.

**Pew Research Center Datasets:** [pewinternet.org/datasets](http://pewinternet.org/datasets)

Raw data from Pew Research.

**Project Outcome:** [projectoutcome.org](http://projectoutcome.org)

Outcome data from library surveys throughout the United States.

**Public Library Survey:**

[nlis.gov/research-evaluation/data-collection/public-libraries-survey/explore-pls-data](http://nlis.gov/research-evaluation/data-collection/public-libraries-survey/explore-pls-data)

Annual survey results since 1988 on the state of public libraries in the United States.

**State Cartographer's Office:** [sco.wisc.edu/data](http://sco.wisc.edu/data)

A list of resources for downloading commonly-requested WI geospatial datasets including boundary maps.

**USDA National Agricultural Statistics Service (WI):** [nass.usda.gov/Statistics\\_by\\_State/Wisconsin](http://nass.usda.gov/Statistics_by_State/Wisconsin)

Agricultural statistics that includes a searchable database that can be limited by geographic areas.

**WI Department of Administration (DOA) Demographic Services Center:**

[doa.state.wi.us/Divisions/Intergovernmental-Relations/Demographic-Services-Center](http://doa.state.wi.us/Divisions/Intergovernmental-Relations/Demographic-Services-Center)

Population estimates and projections for all WI towns, villages and cities.

**WI Department of Health Services Data & Statistics:** [dhs.wisconsin.gov/stats/index.htm](http://dhs.wisconsin.gov/stats/index.htm)

Vital WI health statistics by topic.

**WI Food Security Project:** [foodsecurity.wisc.edu](http://foodsecurity.wisc.edu)

Data and charts about the food security infrastructure in WI.

**WI Information System for Education WISEdash Data Resources:** [dpi.wi.gov/wisedash/help/data-resources](http://dpi.wi.gov/wisedash/help/data-resources)

Data sources about students, schools (staff, programs, finance), performance reports, and types of schools.

**WI Local Government Web Mapping Sites:** <http://maps.aqua.wisc.edu/wisconsin-lms.htm>

Links to WI county, local government, and municipal/town map sites and services.

**WI Public Library Service Data:** [dpi.wi.gov/plid/data-reports/service-data](http://dpi.wi.gov/plid/data-reports/service-data)

Annual public library statistics at the state, county, system, and library levels.

**WI School District Performance Report (SDPR):** [apps2.dpi.wi.gov/sdpr/spraction](http://apps2.dpi.wi.gov/sdpr/spraction)

Annual school report with multiple indicators and comparisons to districts in the same athletic conferences.

**WI School Nutrition Program Statistics:** [dpi.wi.gov/school-nutrition/program-statistics](http://dpi.wi.gov/school-nutrition/program-statistics)

Participation in nutritional programs including WI school free/reduced eligibility data.

05.23.2018 (J.Hoesly)

<https://goo.gl/55RLkS>

2



**South Central Library System**  
Helping Libraries Serve the Public

**Free DATASETS**  
For WI Public Libraries

**WI State Legislature Open GIS Data:** [data-ltshb.opendata.arcgis.com](http://data-ltshb.opendata.arcgis.com)

Open GIS datasets including WI legislative district collections and election data.

**WI WORKnet Data Table Menu:** [worknet.wisconsin.gov/worknet/databluelist.aspx?menuselection=de](http://worknet.wisconsin.gov/worknet/databluelist.aspx?menuselection=de)

WI economic data on employment and unemployment, wages, occupations and industries.

**WISEdash:** [wisedash.dpi.wi.gov/Dashboard/portalHome.jsp](http://wisedash.dpi.wi.gov/Dashboard/portalHome.jsp)

A data dashboard to explore statistics about Wisconsin Public Schools.

**WISH (Wisconsin Interactive Statistics on Health):** [dhs.wisconsin.gov/wish/index.htm](http://dhs.wisconsin.gov/wish/index.htm)

A query system that provides health indicators (measures of health) in Wisconsin over time and by geographic location.

05.23.2018 (J.Hoesly)

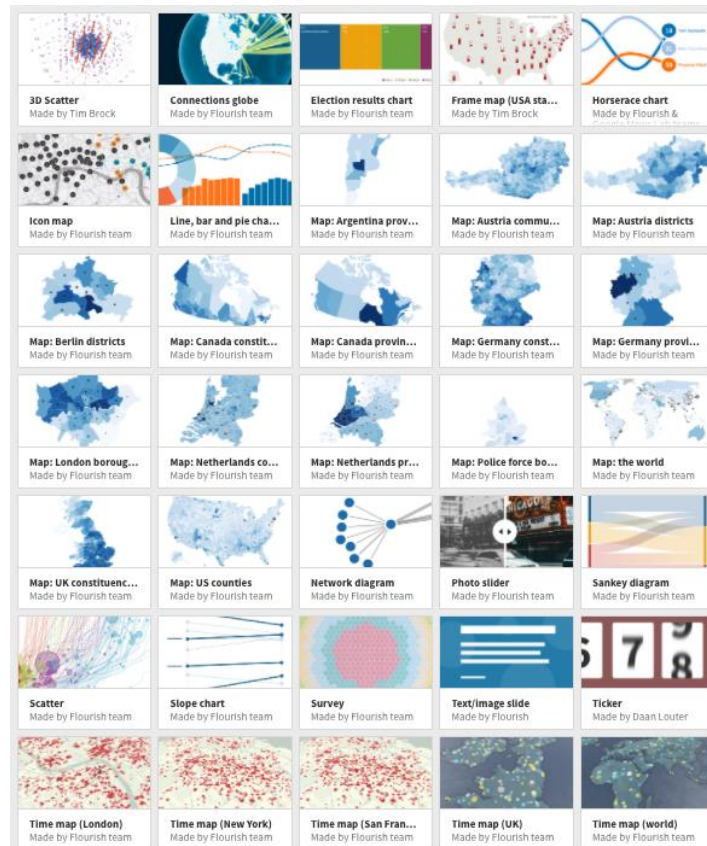
<https://goo.gl/55RLkS>

3

<https://goo.gl/55RLkS>

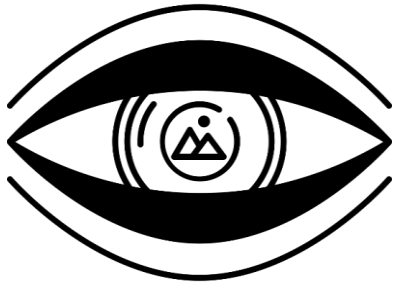


# Visual Data



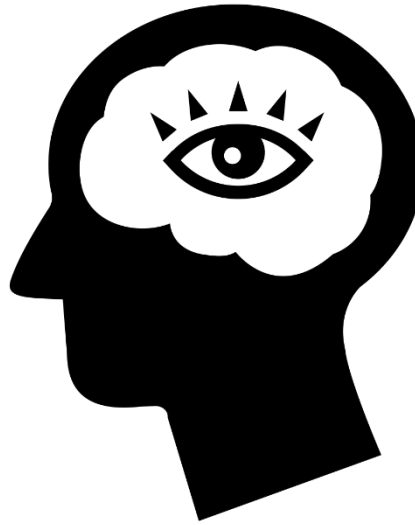
# Is a picture worth a thousand words?

---



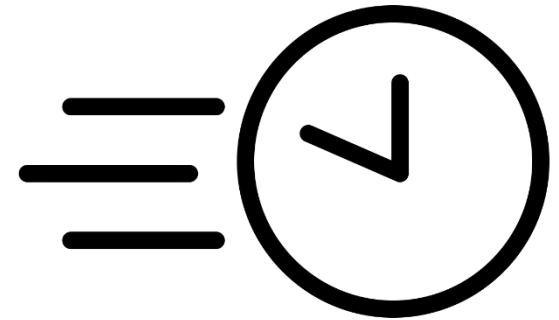
65%

of the  
population are  
visual learners



90%

of information  
transmitted to  
the brain is visual



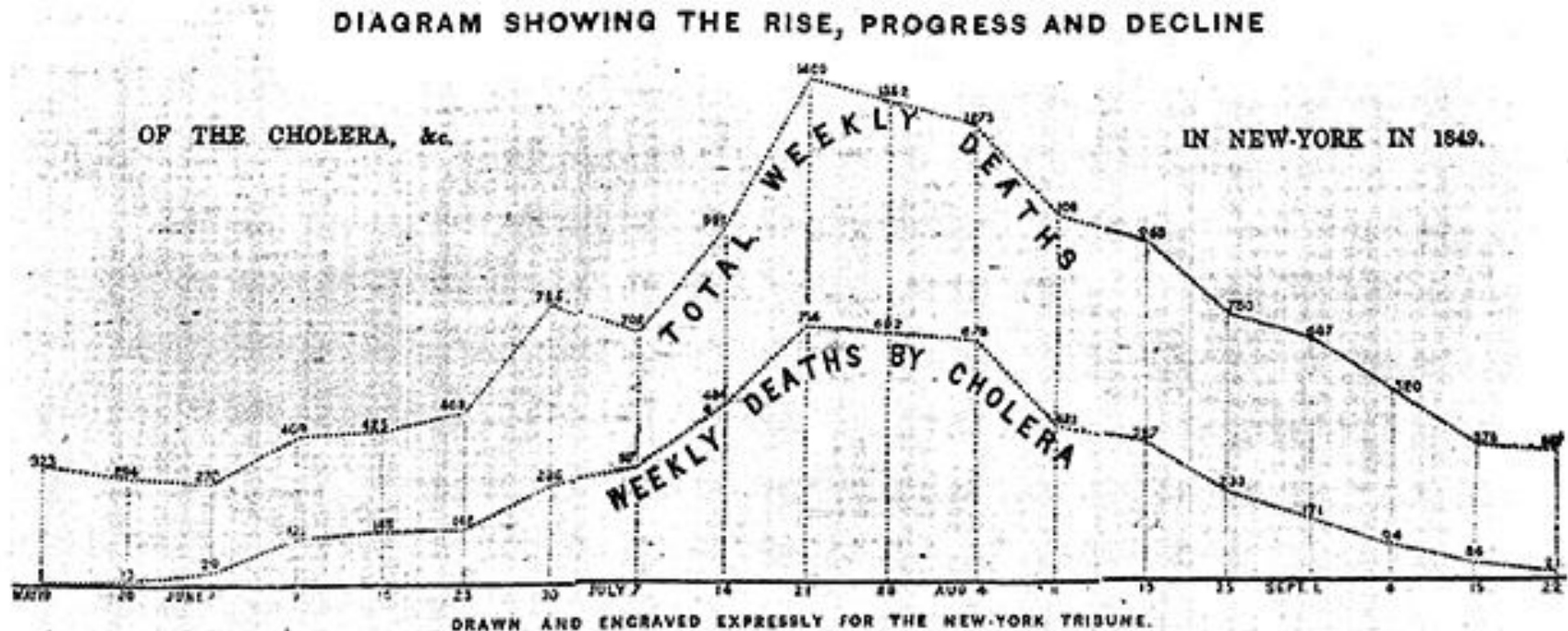
60,000x

faster for the brain  
to process visuals  
than text

# Visualizations - Past

Infographics in the Time of Cholera by Scottt Kein, March 16, 2016

[https://www.propublica.org/nerds/infographics-in-the-time-of-cholera?utm\\_content=buffer9314e&utm\\_medium=social&utm\\_source=plus.google.com&utm\\_campaign=buffer](https://www.propublica.org/nerds/infographics-in-the-time-of-cholera?utm_content=buffer9314e&utm_medium=social&utm_source=plus.google.com&utm_campaign=buffer)



The above Diagram, or Graphic Table, (for which we are indebted to Professor GILLESPIE of Union College,) represents to the eye, in a very striking manner, the rise, progress, and decline of the Cholera, and other diseases in our City, during the last four months.

Each half-inch along the bottom line represents a week. The dates are placed under each. At the end of each half-inch, or week, are upright dotted lines, whose various lengths indicate the number of deaths by Cholera, and other causes, during that week; each inch on these upright lines corresponding to 500 deaths. The numbers are placed at the top of each. The zig-zag lines, which join the ends of these lines, show, by their upward or downward slopes, whether the deaths during those weeks have increased or decreased, rapidly or slowly.

Some curious circumstances are apparent, on an inspection of this figure. We see that during the first two weeks of the Cholera, while it was increasing, as shown by

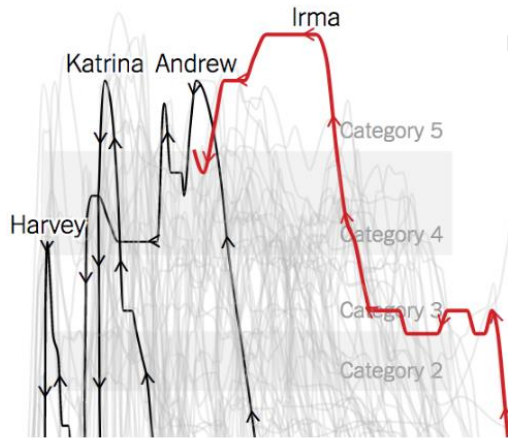
the line sloping upward, the total deaths were decreasing, as shown by the line sloping downward. This was probably caused by the great care in diet, &c. then practiced, on the first alarm. In the week ending July 7, while the Cholera line goes up the "Total deaths" line unaccountably goes down. Thence both lines go on ascending, and the corresponding number of deaths increasing, till in the week ending July 21, they reach their culminating point. Thence there is a constant and quite regular descent, excepting a sudden fall, from Aug. 4 to 11. This may have arisen from the diminution of population, consequent upon the custom of many persons to leave the city at the beginning of that month. The descent keeps on, till it brings up to our present normal condition.

If the average temperature, moisture, electrical state, &c. during these weeks were represented in the same manner, and added to this diagram, their comparison would show at a glance whether there has been any connection between them.

# Visualization - Present

## 2017: the Year in Visual Stories and Graphics

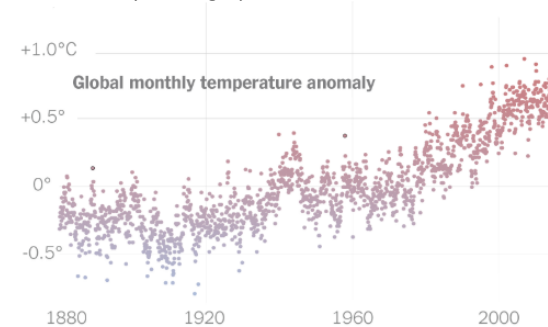
<https://www.nytimes.com/interactive/2017/12/21/us/2017-year-in-graphics.html>



### Hurricane Irma Is One of the Strongest Storms In History

SEPTEMBER 9, 2017

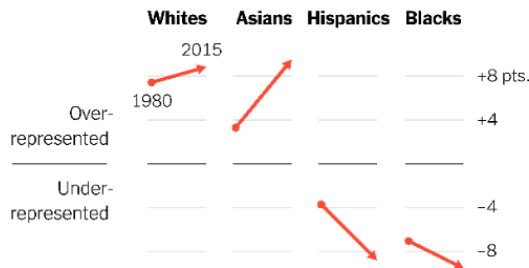
The hurricane has broken records for wind speed and number of days as a Category 5 storm.



### How 2016 Became Earth's Hottest Year on Record

JANUARY 18, 2017

2016 is the hottest year on the historical record and the third consecutive record-breaking year, scientists say.



### Even With Affirmative Action, Blacks and Hispanics Are More Underrepresented at Top Colleges Than 35 Years Ago

AUGUST 24, 2017

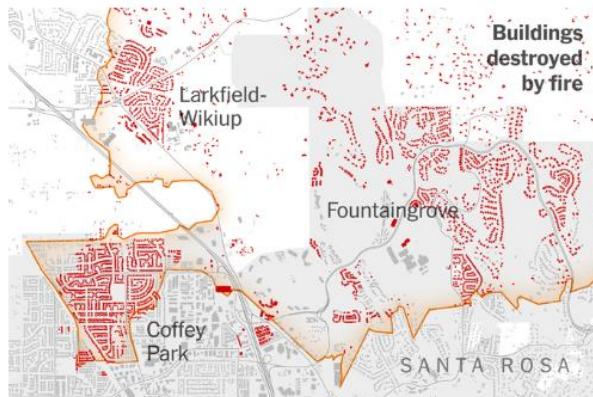
How 100 top U.S. schools compare.



### Comparing the Las Vegas Attack With Daily Gun Deaths in U.S. Cities

OCTOBER 6, 2017

Fifty-eight people were killed in the Las Vegas massacre. The same number were killed by gun violence in 28 days in Chicago.



### Northern California Fires Have Destroyed at Least 5,700 Buildings

OCTOBER 14, 2017

A New York Times analysis found that the Tubbs fire, which hit Santa Rosa, leveled what could be a record number of buildings for the state.

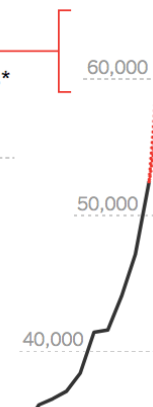
### 2016 drug overdoses

Between 59,000 and 65,000 deaths\*

Peak car crash deaths (1972)

Peak H.I.V. deaths (1995)

Peak gun deaths (1993)



### Drug Deaths in America Are Rising Faster Than Ever

JUNE 5, 2017

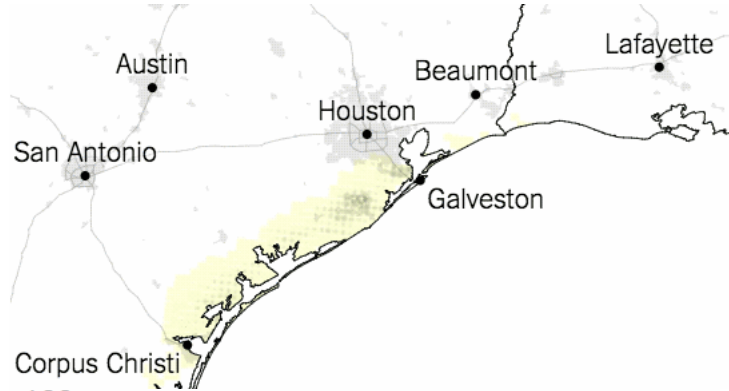
New data compiled from hundreds of health agencies reveals the extent of the drug overdose epidemic last year. Our estimates show deaths rising faster than ever — up about 19 percent in 2016, and all evidence suggests they will rise again in 2017.



# Visualization - Future

## 2017: the Year in Visual Stories and Graphics

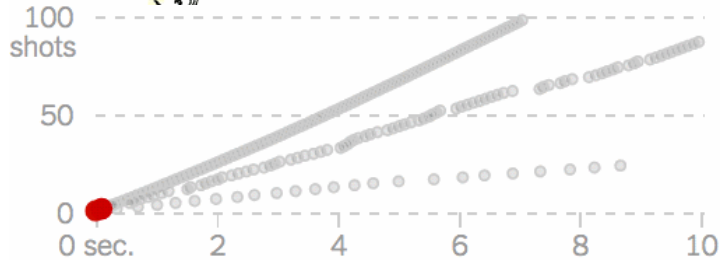
<https://www.nytimes.com/interactive/2017/12/21/us/2017-year-in-graphics.html>



### Maps: Tracking Harvey's Destructive Path Through Texas and Louisiana

AUGUST 24, 2017

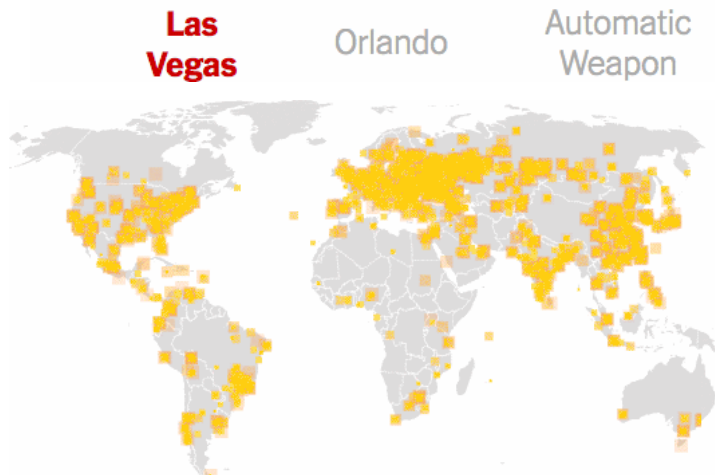
Maps and animated satellite imagery show the scale and reach of the storm.



### Nine Rounds a Second: How the Las Vegas Gunman Outfitted a Rifle to Fire Faster

OCTOBER 2, 2017

Analysis of video shows that the gunman used rifles with rapid-fire capabilities, and an official reports of one modified with a "bump stock."



### Animated Map of How Tens of Thousands of Computers Were Infected With Ransomware

MAY 12, 2017

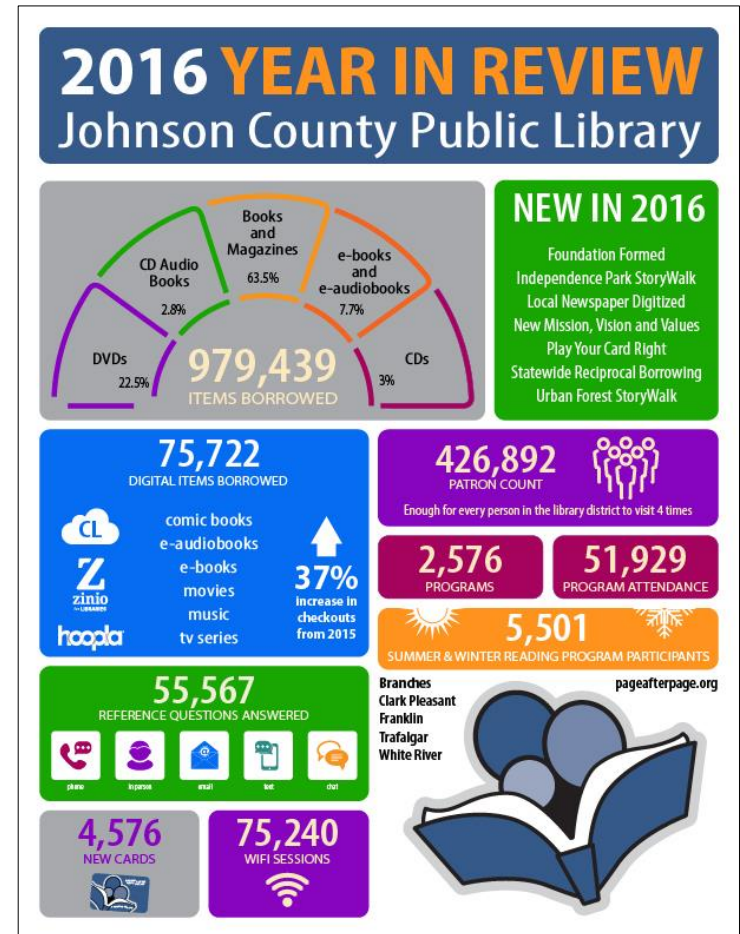
A new strain of ransomware spread rapidly around the world.



# Common Visualization Types

Librarian Design Share  
<https://librariandesignshare.org>

- Infographics
- Dashboards
- Handouts & Brochures
- Flyers & Advertisements
- Strategic Plans/Studies
- Posters
- Book Marks, etc.



# Stories

Question + Visual Data + Context

---

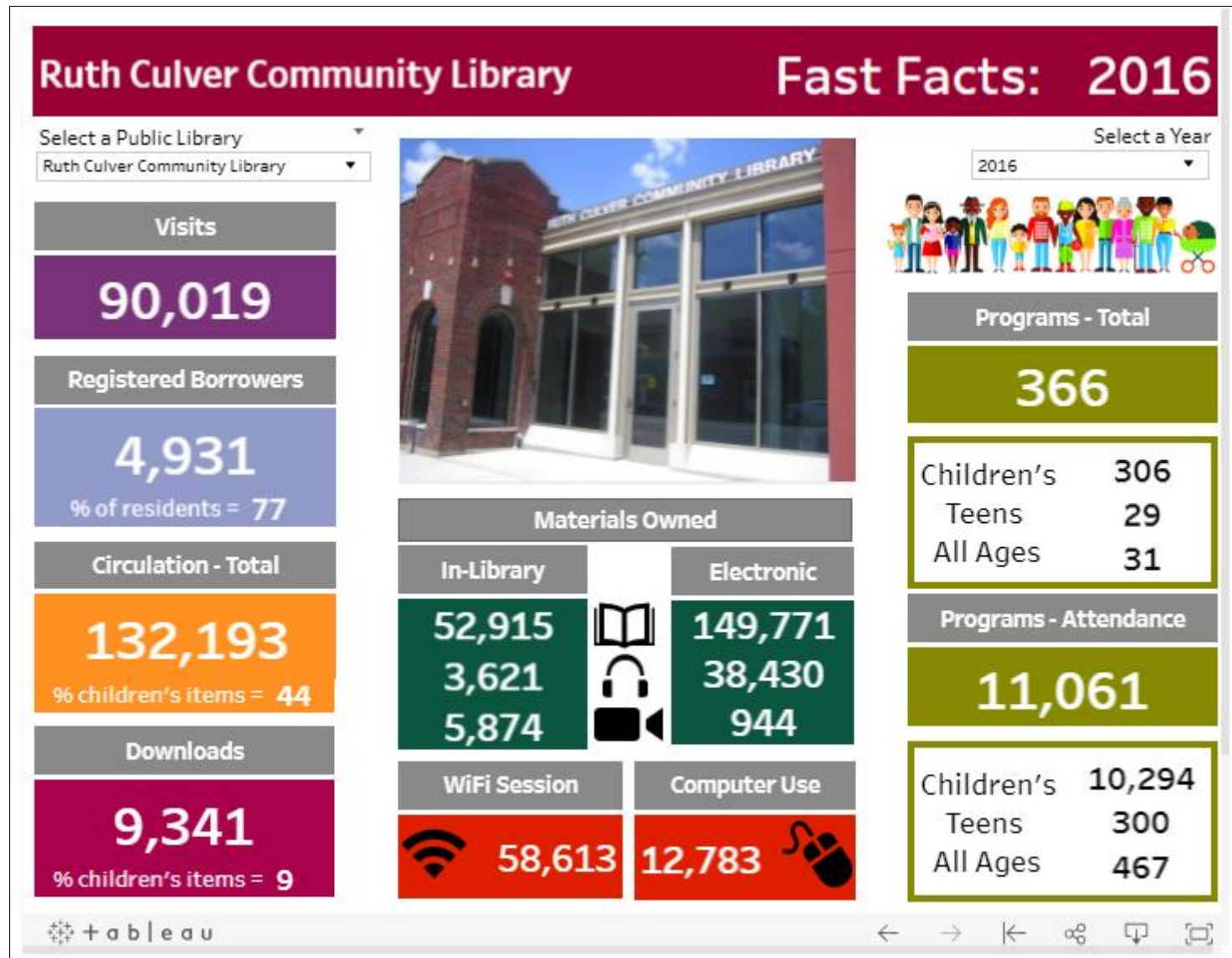


“Stories are remembered up to 22 times more than facts alone.”

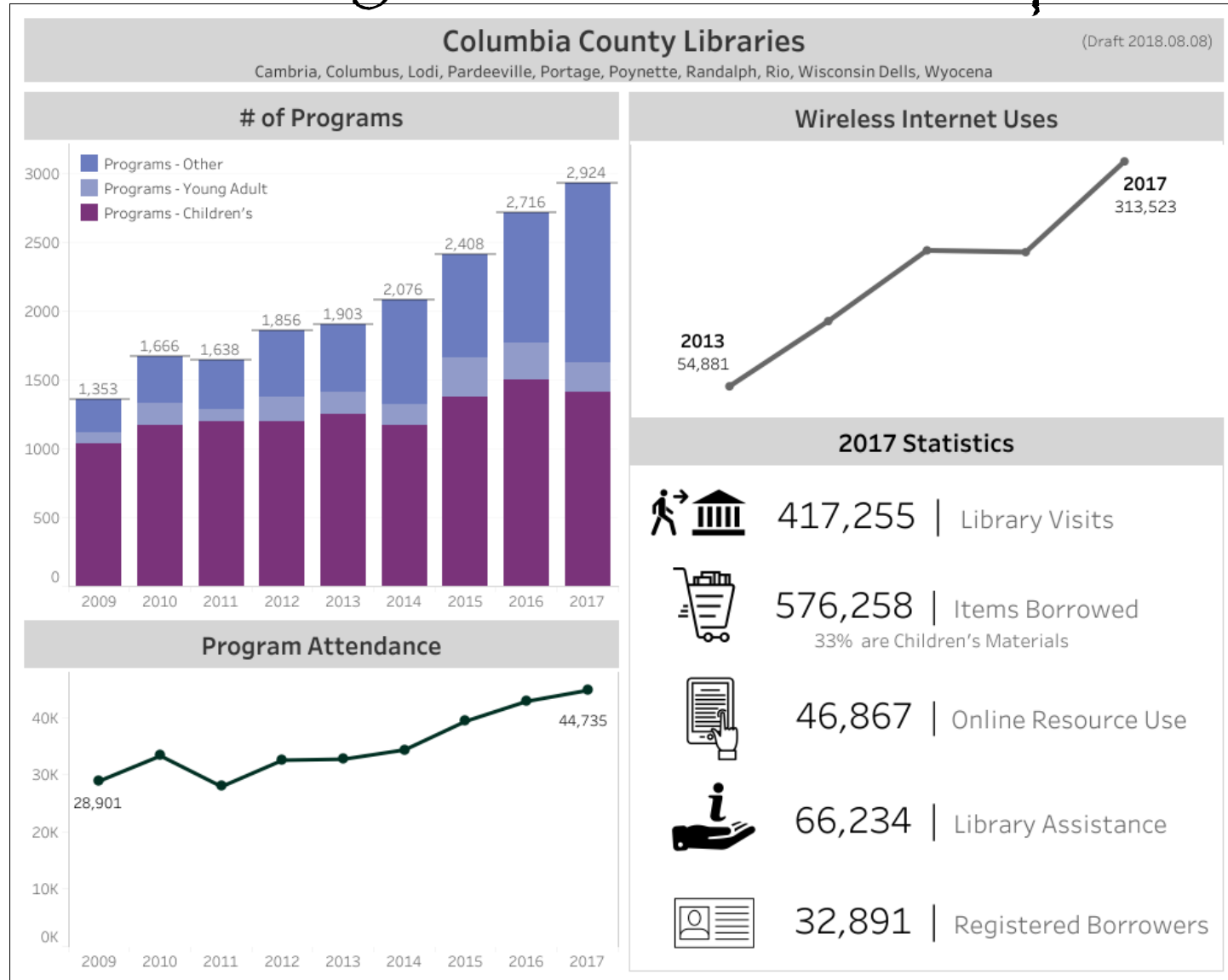
---

“And when data and story are used together, audiences are moved both intellectually and emotionally.”

# How is our library being used?



# What library services are improving?



**Columbia County Libraries:** [https://public.tableau.com/views/ColumbiaCountyLibraries/Stats?:embed=y&:display\\_count=yes](https://public.tableau.com/views/ColumbiaCountyLibraries/Stats?:embed=y&:display_count=yes)

**Dataset:** Wisconsin Public Library Service Data: <https://dpi.wi.gov/pld/data-reports/service-data>



# Where are the biggest users?



Circulation per capita

Circulation per capita -2017

15.6

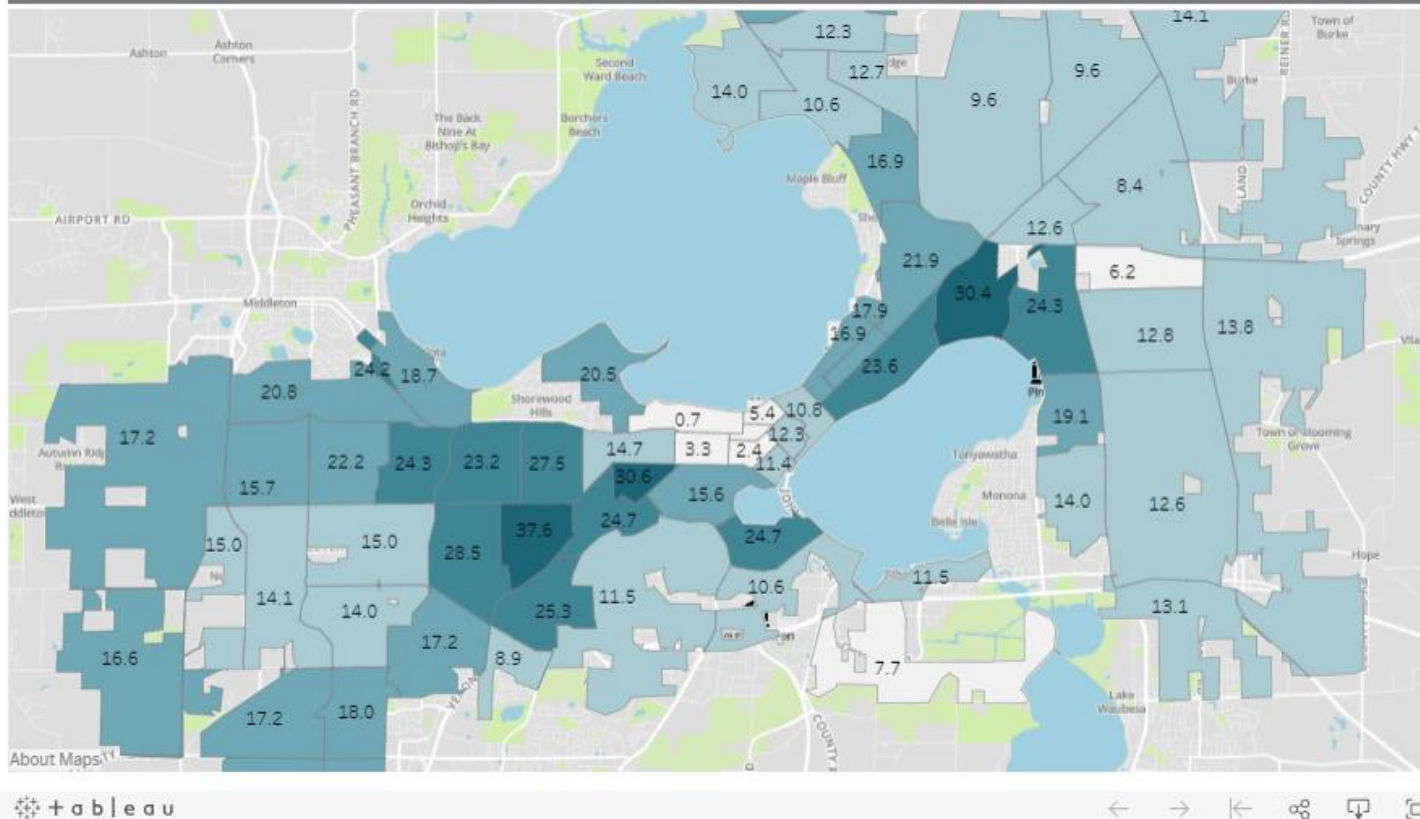
Items borrowed by residents

3,637,852

Population - 2010 Census

233,201

Circulation per capita by census tract - 2017



MPL-Circ per Capita: [https://public.tableau.com/views/MPL-CircperCapita/Circpercapita?:embed=y&:display\\_count=yes](https://public.tableau.com/views/MPL-CircperCapita/Circpercapita?:embed=y&:display_count=yes)

Datasets: Census Tract Shapefile | Census SF1 Population (MSN) | Total CKO by PSTAT 2017 | PSTAT Geocodes

# Who is using the library?



Resident Users

% who used the collection - 2017

24.2%

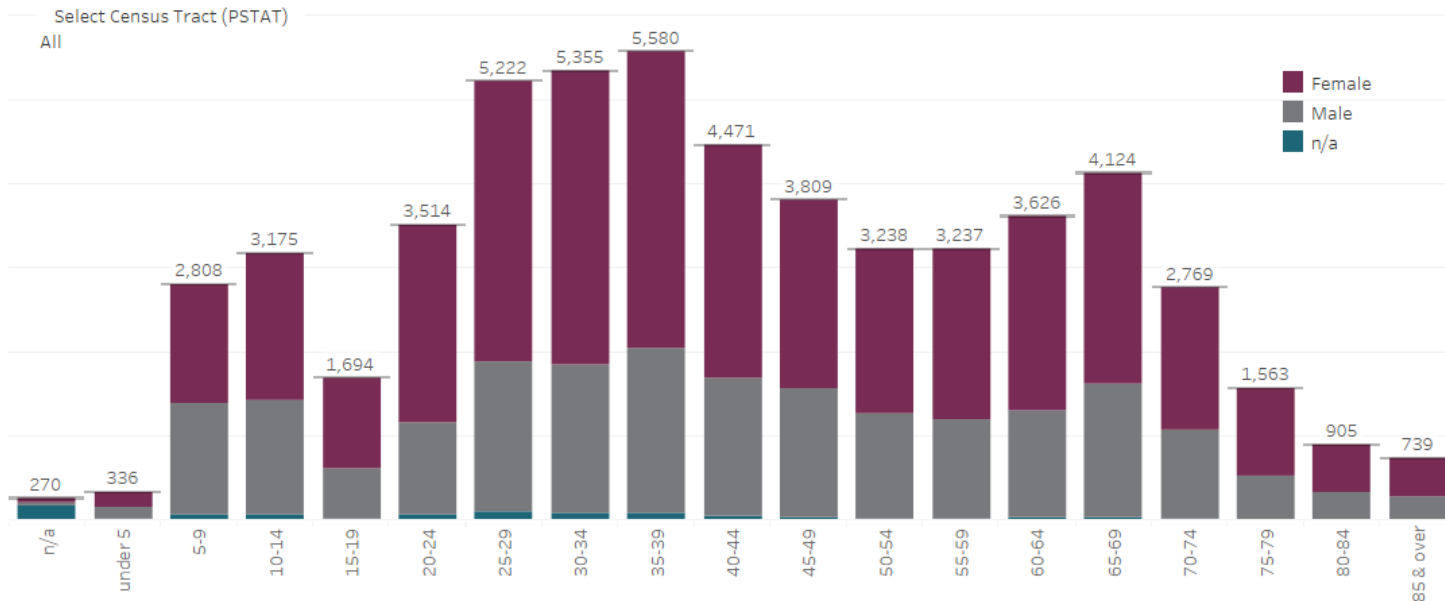
Residents with a library card

160,657

Residents that used their card

56,435

Age and sex of residents who checked out materials - 2017



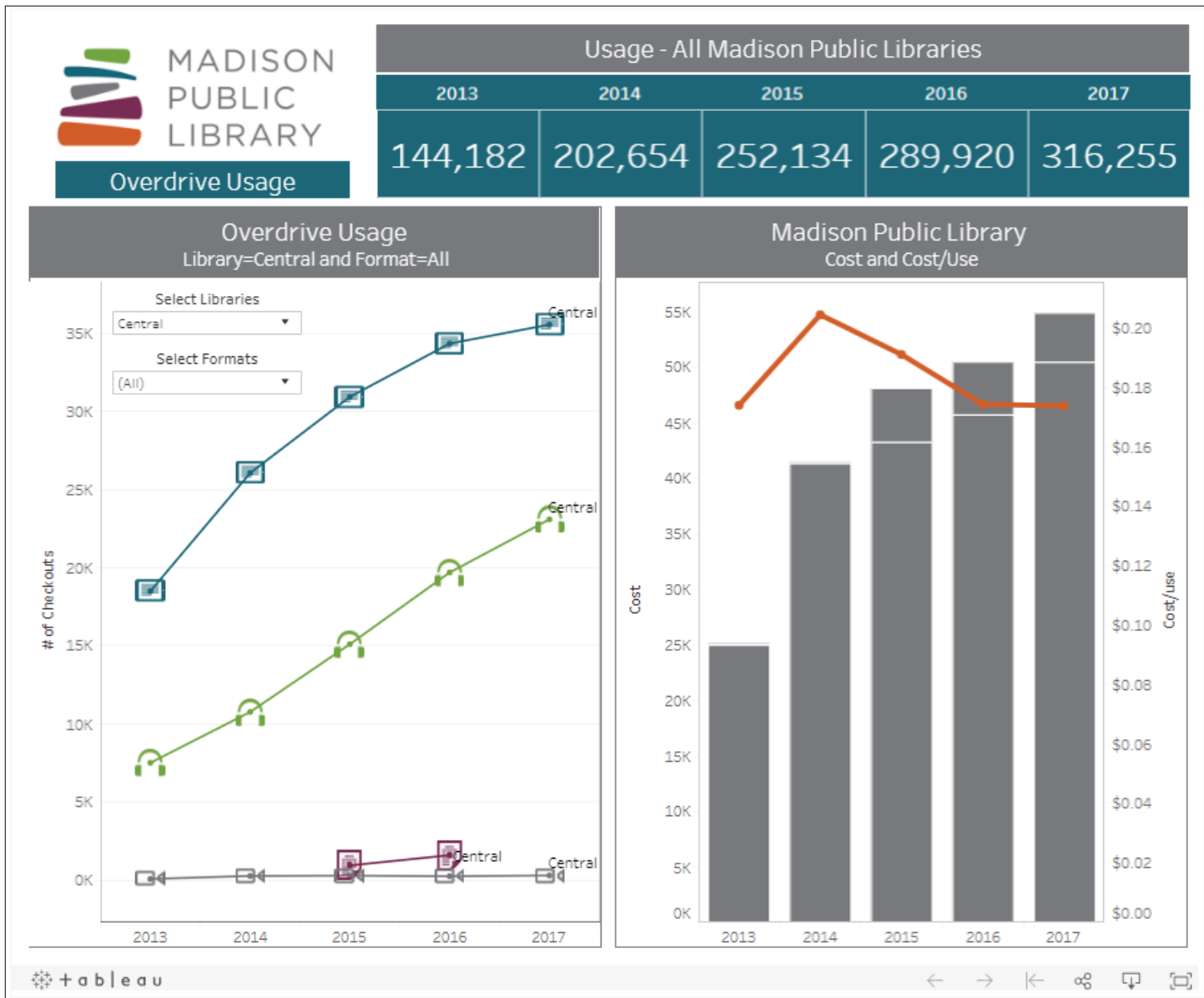
Number of residents who used their library card quarterly - 2017

Q1	Q2	Q3	Q4
38,764	40,744	41,558	37,370

MPL-Residents: [https://public.tableau.com/views/MPL-Residents/DemographicsbyPstat?:embed=y&:display\\_count=yes](https://public.tableau.com/views/MPL-Residents/DemographicsbyPstat?:embed=y&:display_count=yes)

Dataset: LibLime KOHA via MySQL

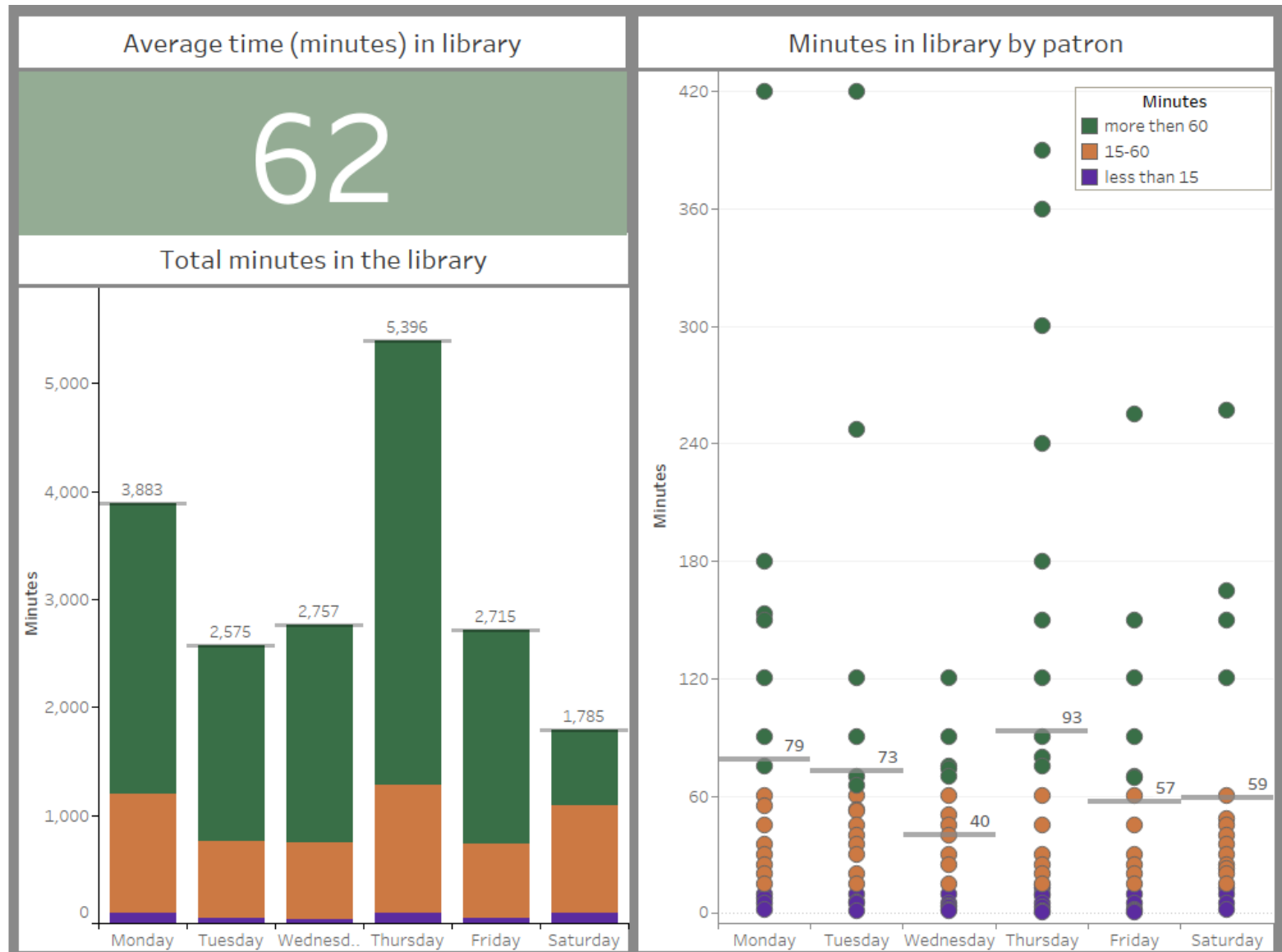
# Is Overdrive worth the cost?



MPL-Overdrive Usage: [https://public.tableau.com/views/2018\\_01\\_21MPLOverdrive/MPLOverdriveUse?:embed=y&:display\\_count=yes](https://public.tableau.com/views/2018_01_21MPLOverdrive/MPLOverdriveUse?:embed=y&:display_count=yes)

Datasets: Overdrive Usage Statistics | Overdrive Cost Data

# How long do patrons visit the library?



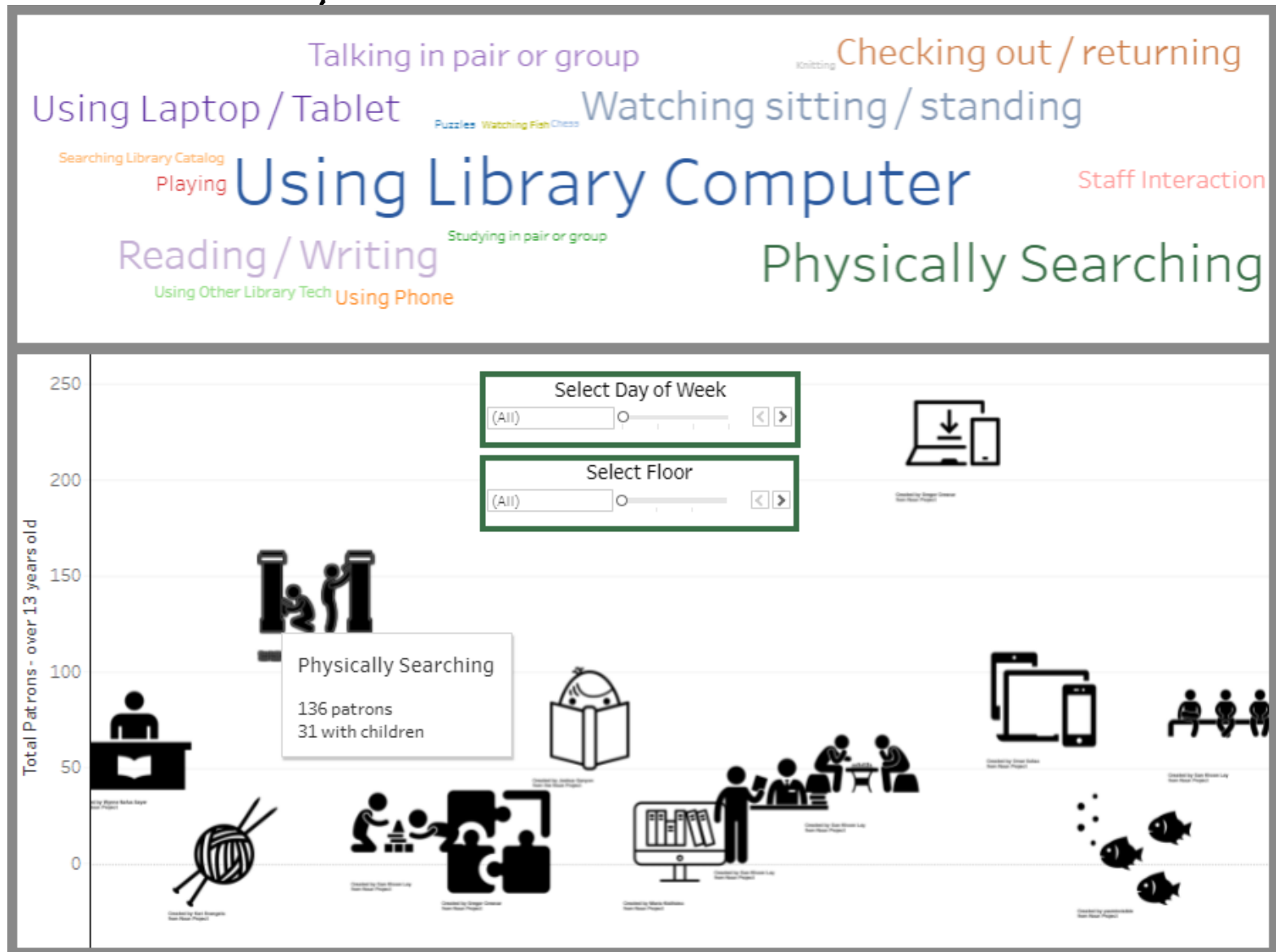
Portage County Library | Sweep 2017:

[https://public.tableau.com/views/2017\\_08\\_21PortageSweep/PortageCountyLibrarySweep?:embed=y&:display\\_count=yes](https://public.tableau.com/views/2017_08_21PortageSweep/PortageCountyLibrarySweep?:embed=y&:display_count=yes)

Datasets: Portage County Library Sweep Study Data <https://goo.gl/a2hKik>



# What are patrons doing in the library?

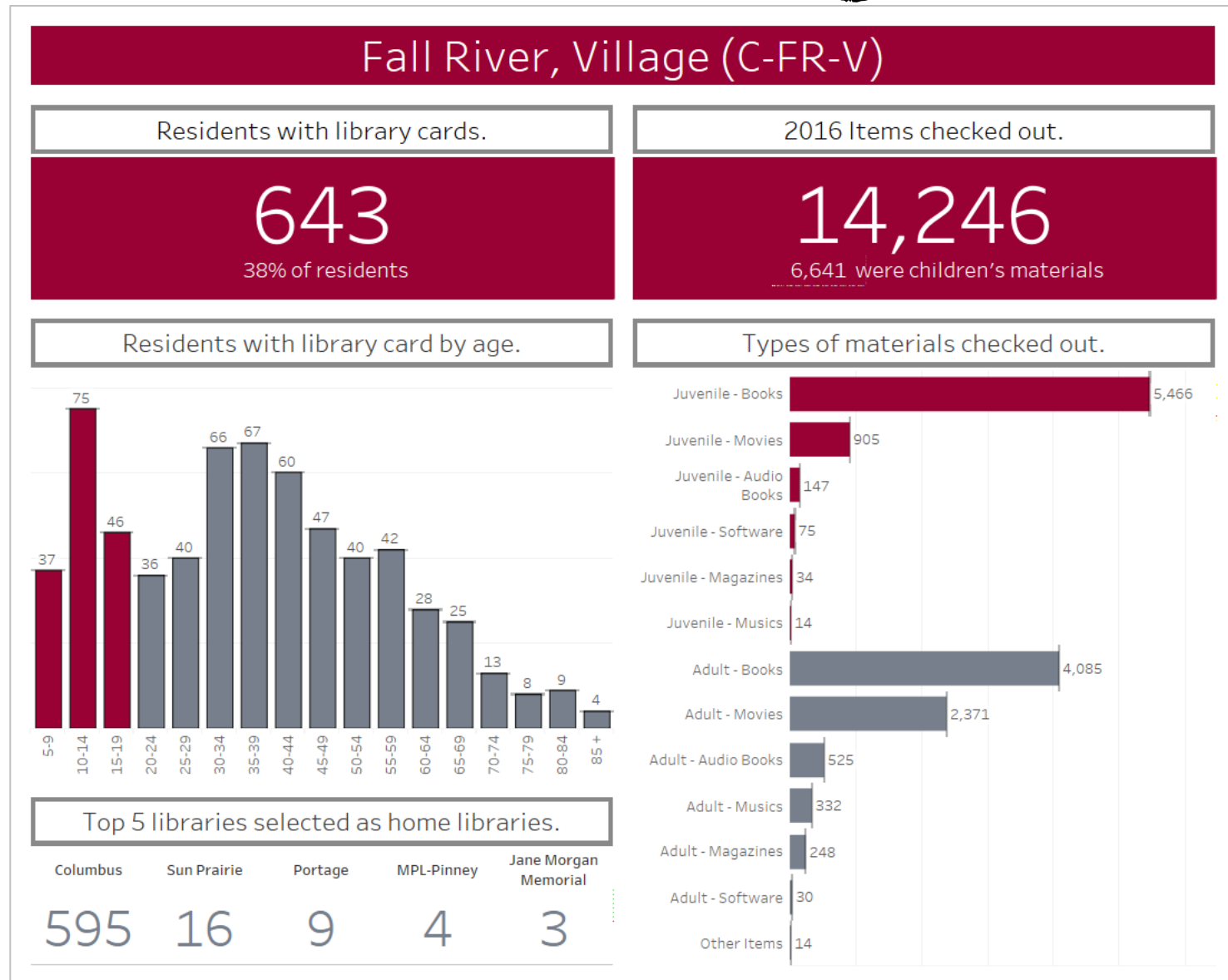


Portage County Library | Sweep 2017:

[https://public.tableau.com/views/2017\\_08\\_21PortageSweep/PortageCountyLibrarySweep?:embed=y&:display\\_count=yes](https://public.tableau.com/views/2017_08_21PortageSweep/PortageCountyLibrarySweep?:embed=y&:display_count=yes)

Datasets: Portage County Library Sweep Study Data <https://goo.gl/a2hKik>

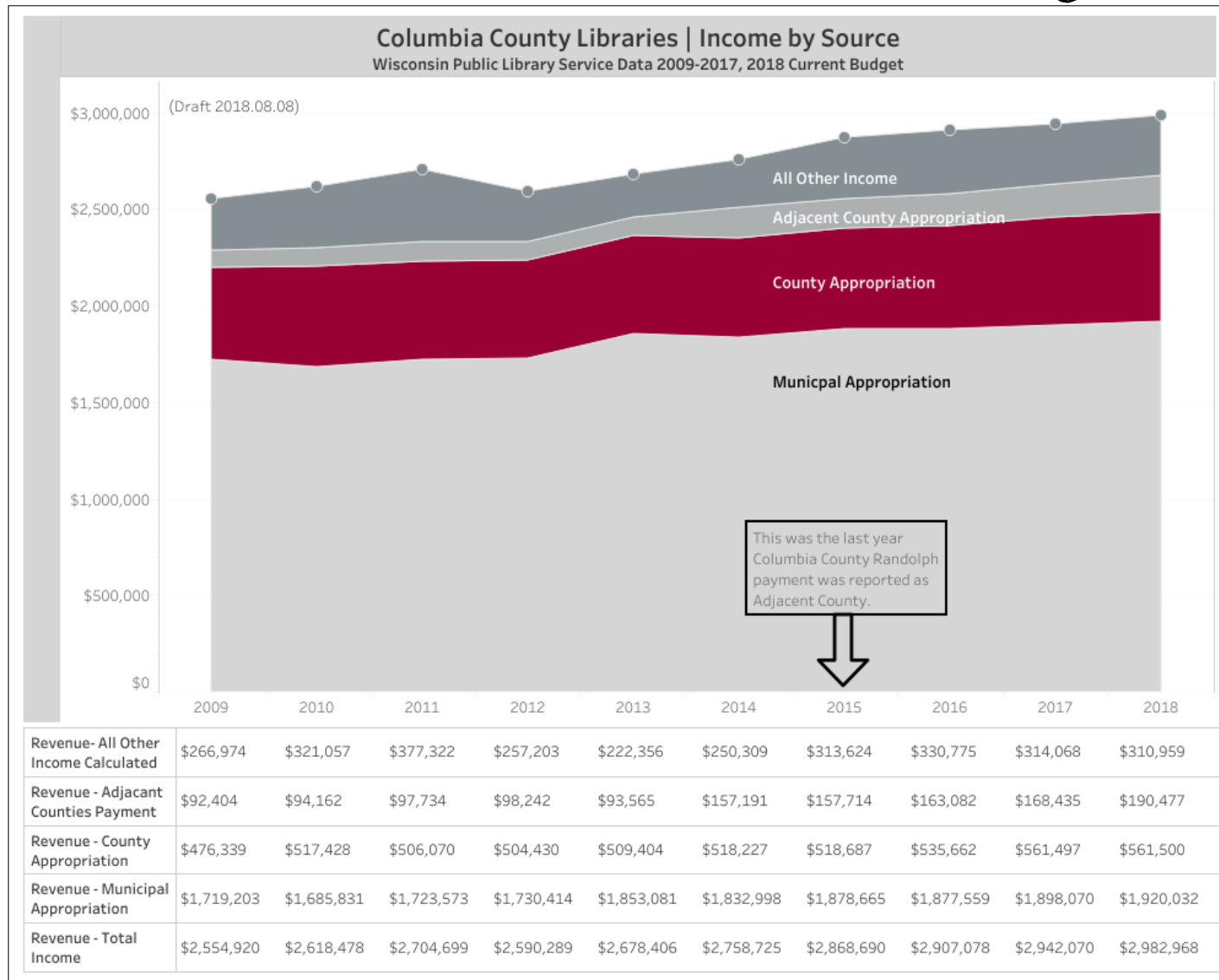
# How are residents using the library?



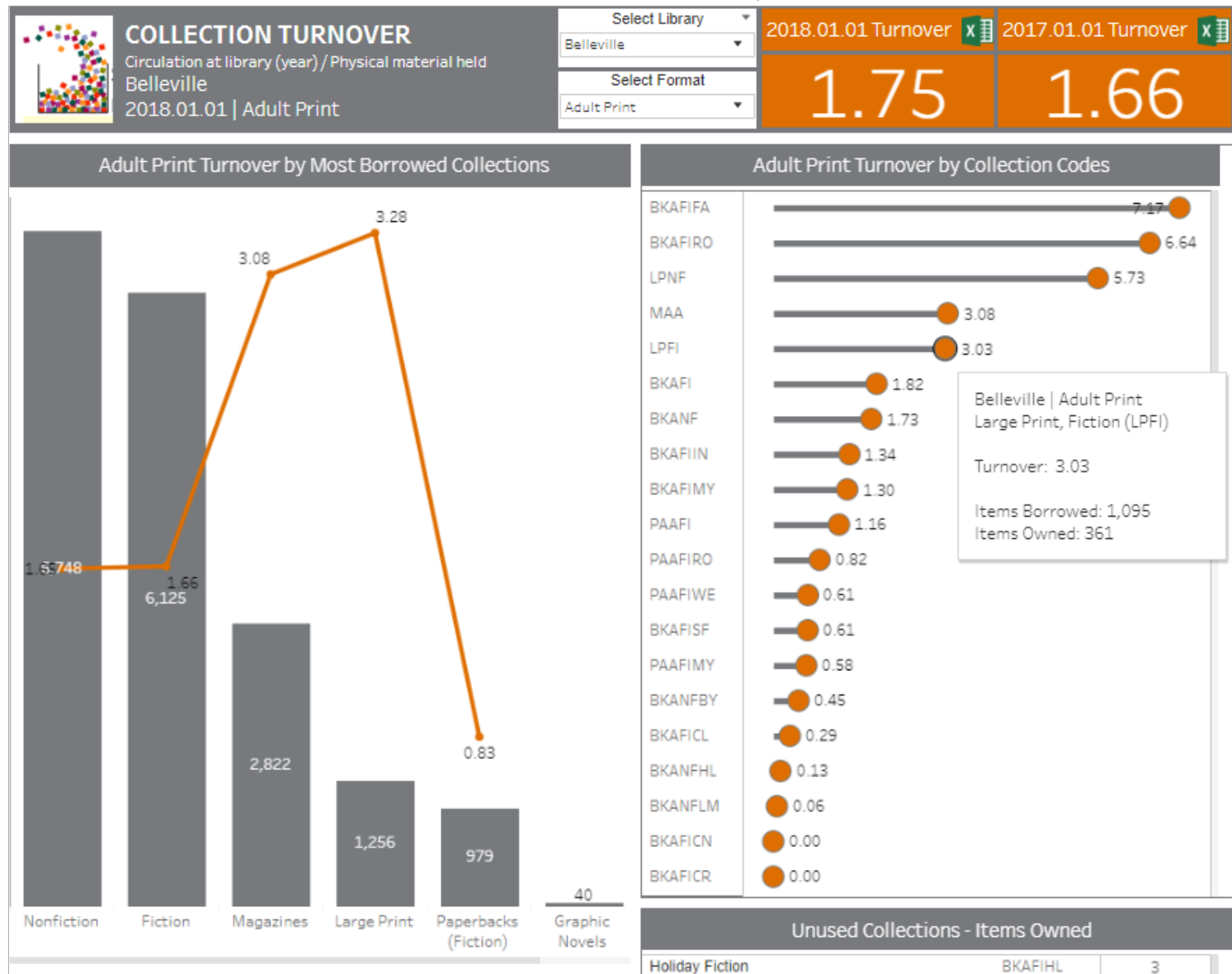
Fall River Patrons and Circulation: [https://public.tableau.com/views/2017\\_12\\_01FallRiver/FallRiver1?:embed=y&:display\\_count=yes](https://public.tableau.com/views/2017_12_01FallRiver/FallRiver1?:embed=y&:display_count=yes)

Dataset: LibLime KOHA via MySQL

# How much of the library budget comes from the County?



# Do we have books patrons want?



SCLS-Turnover: [https://public.tableau.com/shared/Y24CG436Y?:display\\_count=yes](https://public.tableau.com/shared/Y24CG436Y?:display_count=yes)

Datasets: items-owned and LINKcat-circs (monthly extracts) | Koha Collection Codes Split



# What services are most valued?

## NEW GLARUS LIBRARY SURVEY | LIBRARY CARD HOLDER SERVICE IMPORTANCE

96 Responses between February 7 and April 18, 2018

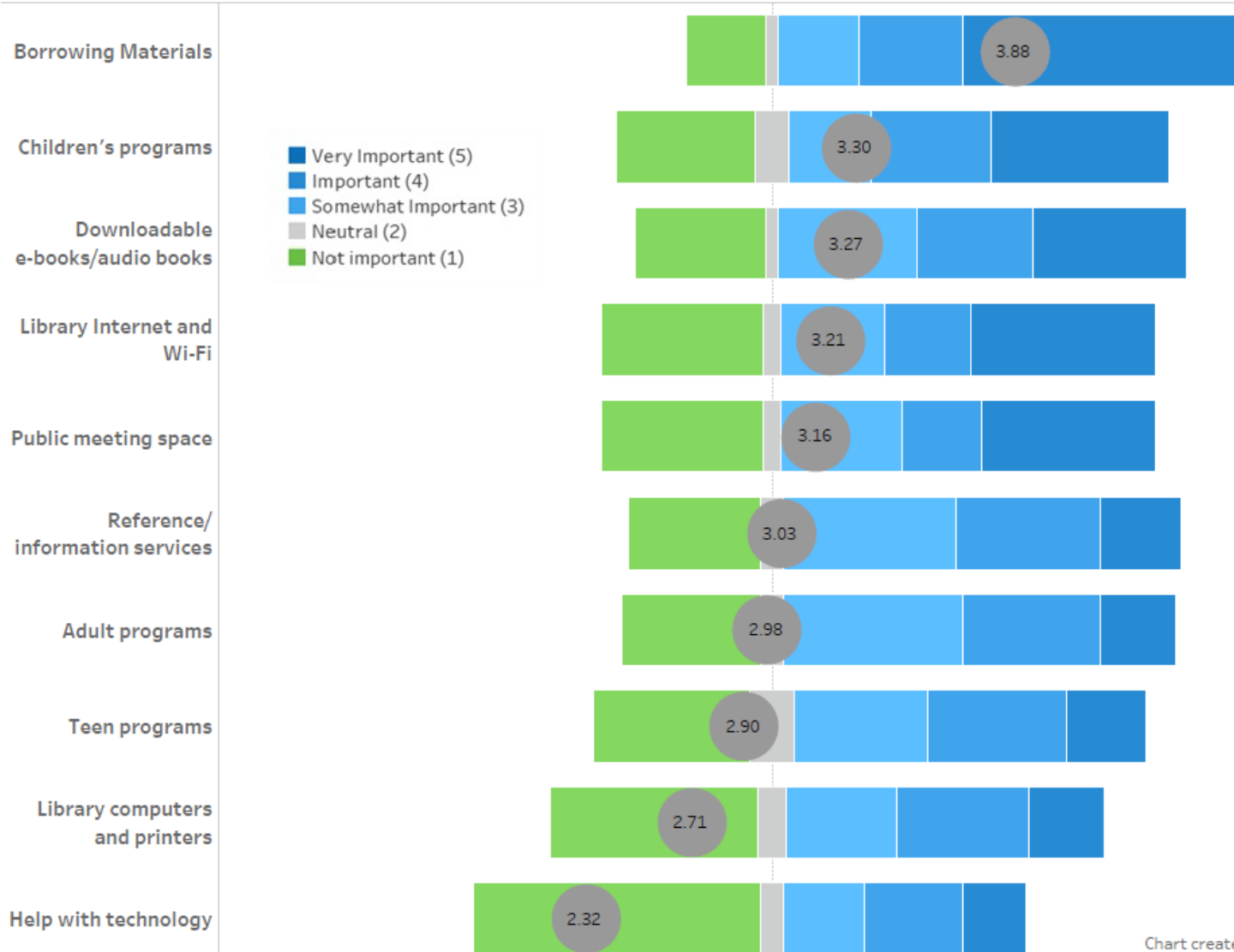
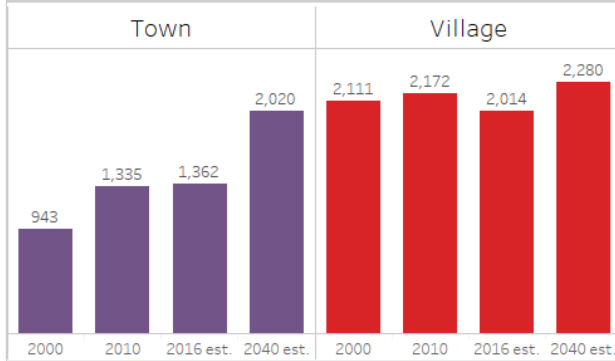


Chart created 6/20/18

# How is our community changing?

## NEW GLARUS POPULATION

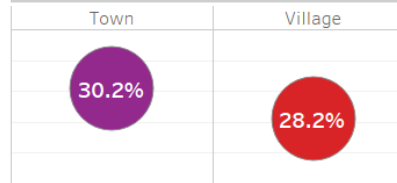
United States Census DP-1, S0101, S0102 | DOA Demographic Services



## NEW GLARUS | HOUSEHOLD PAYING

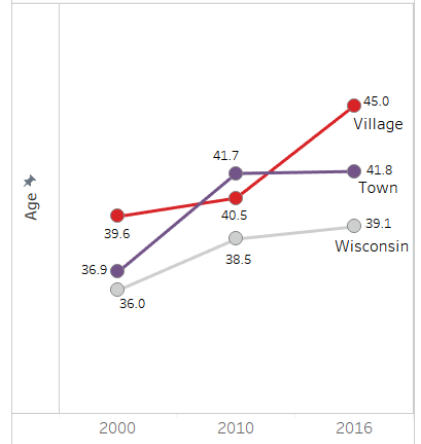
> 30 % OF INCOME FOR HOUSING

2012-2016 American Community Survey, S2503



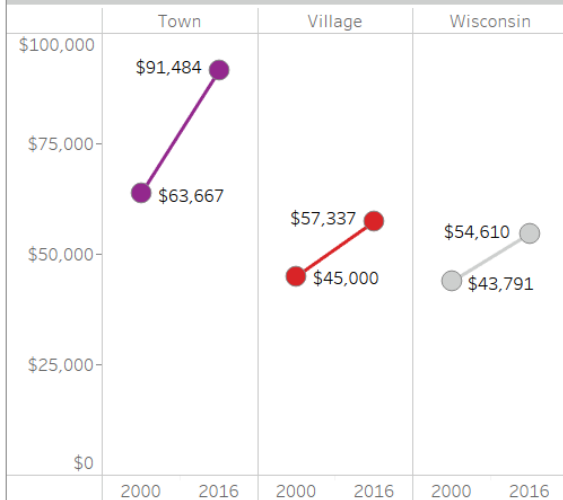
## NEW GLARUS MEDIAN AGE

United States Census DP05, DP1, P013



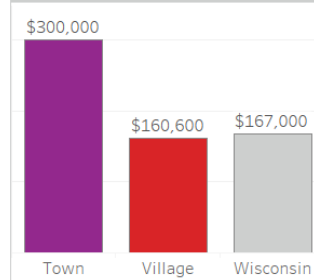
## NEW GLARUS MEDIAN HOUSEHOLD INCOME

United States Census, DP-3, S2503



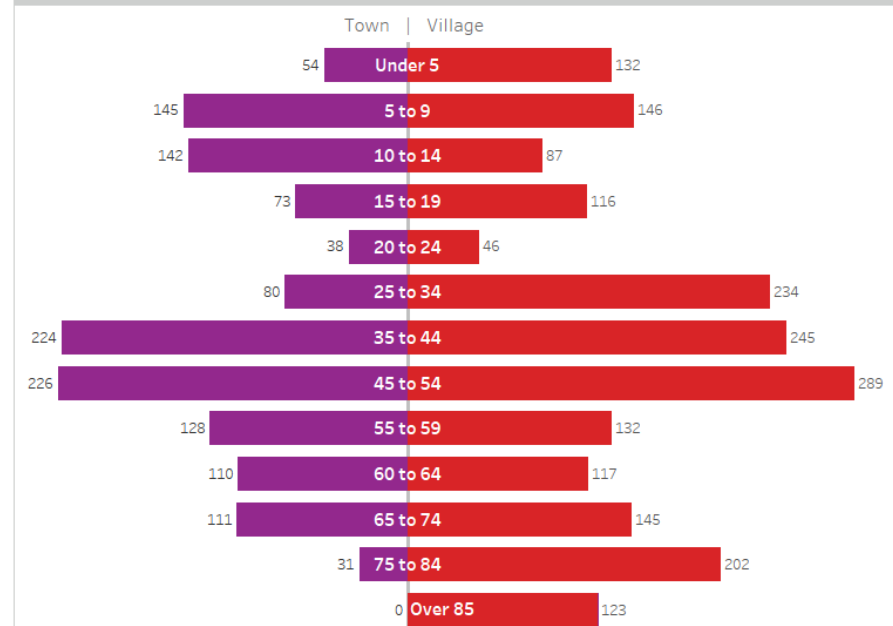
## NEW GLARUS MEDIAN PROPERTY VALUE

2012-2016 American Community Survey, DP04

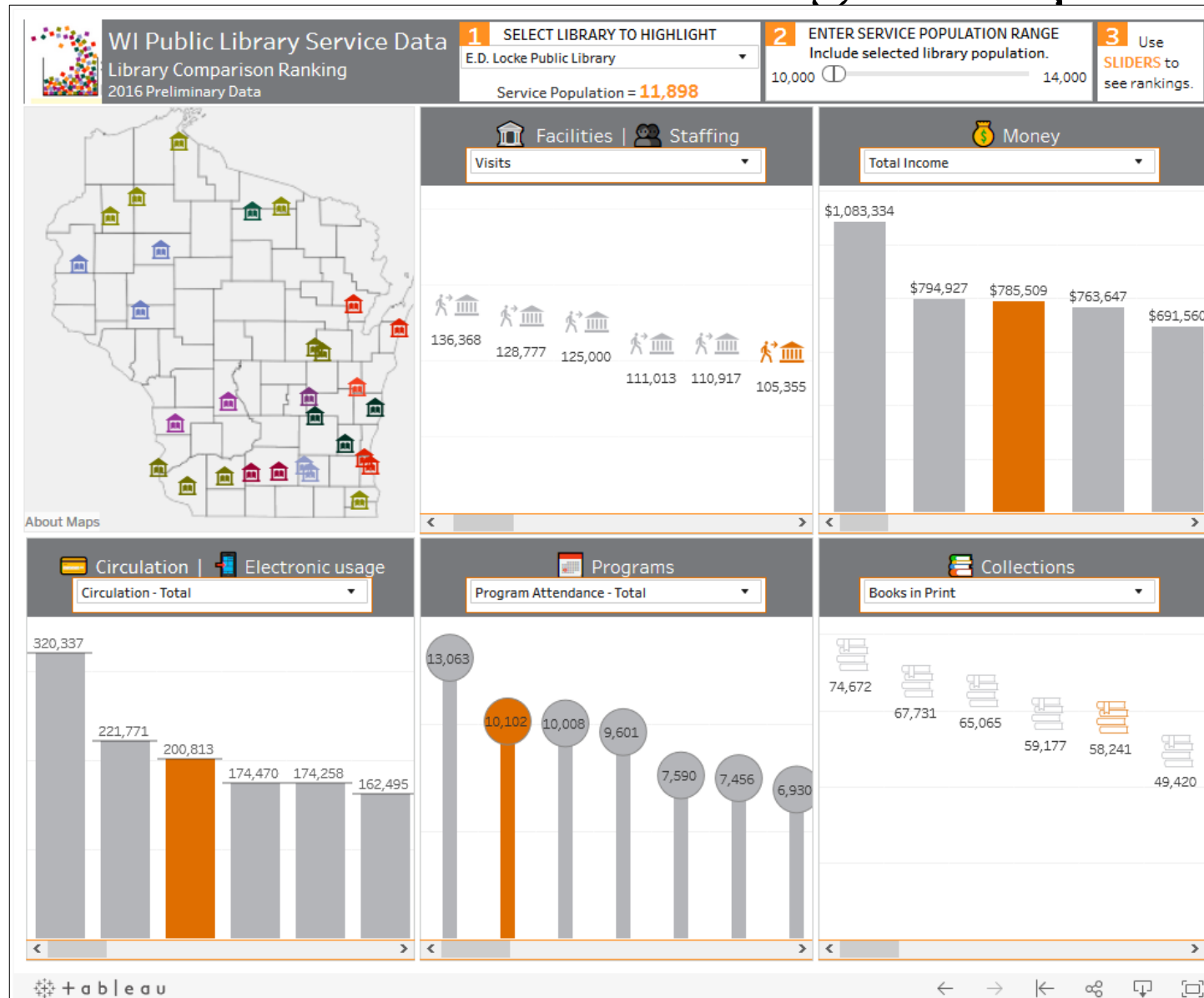


## NEW GLARUS POPULATION BY AGE

2012-2016 American Community Survey, DP05



# How does our library compare?



Annual Library Report | Fast Facts 2012-2016: [https://public.tableau.com/shared/598TTNMGN?:display\\_count=yes](https://public.tableau.com/shared/598TTNMGN?:display_count=yes)

Dataset: Wisconsin Public Library Service Data: <https://dpi.wi.gov/pld/data-reports/service-data>

# More stories to create!

---





# Story Example



Robert (Bob)  
Hoesly



## Hoesly combines farming with chairmanship

When a variety of leadership roles are combined, the result is a powerful force for change. This is the case for Robert (Bob) Hoesly, who is combining his role as a farmer with his role as a chairman of the board of the American Farm Bureau Federation.

Bob Hoesly, 68, is a farmer and a chairman of the board of the American Farm Bureau Federation. He is a member of the National Farm Bureau and the National Farm Press Association. He is also a member of the National Farm Bureau's Board of Directors.

Hoesly is a member of the National Farm Bureau and the National Farm Press Association. He is also a member of the National Farm Bureau's Board of Directors.

Hoesly is a member of the National Farm Bureau and the National Farm Press Association. He is also a member of the National Farm Bureau's Board of Directors.

Hoesly is a member of the National Farm Bureau and the National Farm Press Association. He is also a member of the National Farm Bureau's Board of Directors.

Hoesly is a member of the National Farm Bureau and the National Farm Press Association. He is also a member of the National Farm Bureau's Board of Directors.



Bob Hoesly, 68, is a farmer and a chairman of the board of the American Farm Bureau Federation.



Hoesly is a member of the National Farm Bureau and the National Farm Press Association.



Hoesly is a member of the National Farm Bureau and the National Farm Press Association.

Photo and information reproduced from the Panorama Publication.

# How will you craft your libraries' story?



<https://www.pexels.com/photo/paper-with-ideas-print-on-typewriter-1043510/>

Numbers have an important story to tell. They rely on you to give them a voice. ~ Stephen Few

# Be yourself!



Be creative!



Thank-you!



